



HOSHIZAKI

> IM-35M-2-LM

Daily ice production capacity up to 20KG

> IM-55M-2-LM

Daily ice production capacity up to 32KG

> LM-550M-1

Daily ice production capacity up to 63KG



CUBE ICE MAKER SERIES

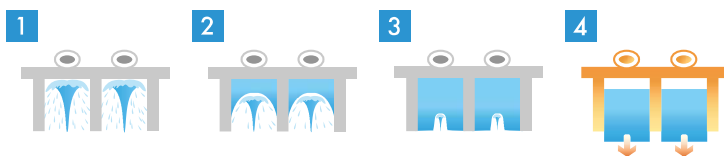
Cube ice is perfectly symmetrical and leaves a good impression with its hard, crystal clear quality that melts very slowly; allowing customers to enjoy their favourite drink longer.

FEATURES

- > ice size suitable for serving alcoholic beverages
- > slim and ideal to be placed at bar counters
- > flush back design for easy installation
- > stainless steel exterior provides a hygienic and high quality finish

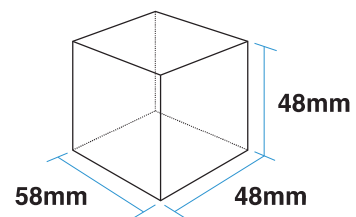


UNIQUE ICE PRODUCTION SYSTEM



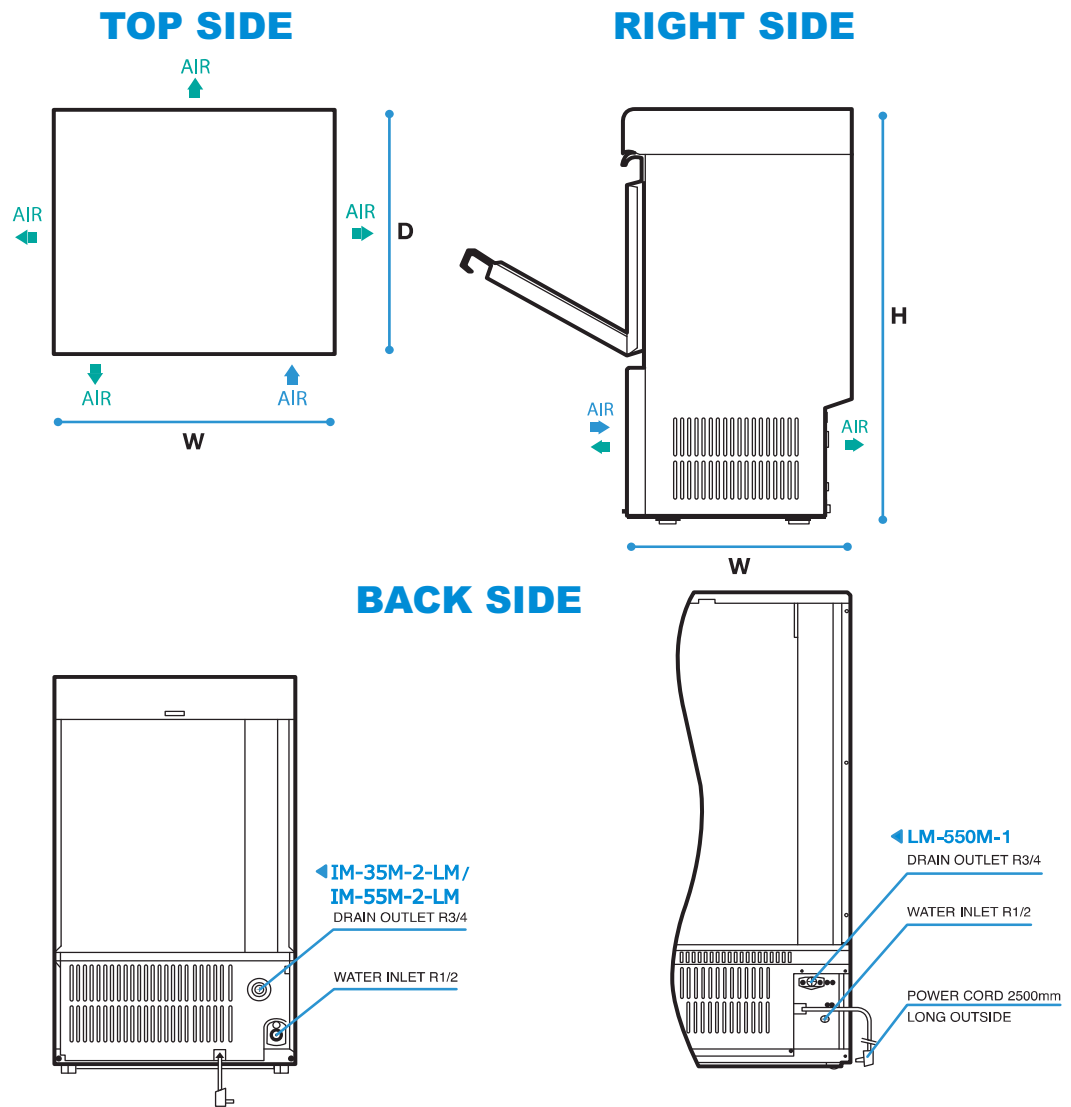
- > Individual cube
- > Impurity free
- > Hardest ice to enjoy slow melting and dilution of drinks

ICE SIZE



DIMENSIONS & SPECIFICATION

CUBE ICE MAKER AIR SYSTEM



MODEL NAME	IM-35M-2-LM	IM-55M-2-LM	LM-550M-1
ICE DIMENSIONS (MM)	48 x 48 x 58		
DIMENSIONS (MM)	500 x 450 x 850	630 x 525 x 850	700 x 525 x 1200
PACKED DIMENSIONS (MM)	609 x 547 x 891	748 x 629 x 915	795 x 625 x 1310
WEIGHT (NETT/GROSS)	42 KG / 46 KG	48 KG / 52 KG	73 KG / 79 KG
AMPERAGE / STARTING AMPERAGE	1.0A / 9A	1.6A / 12A	2.5A / 17A
ELECTRICAL CONSUMPTION	185 W	265 W	435W
REFRIGERANT CHARGE	R134a		R404a
HEAT REJECTION (AT32°C/WT21°C)	480 W (412 kcal/h)	690 W (593 kcal/h)	1300 W (1118 kcal/h)
ICE PRODUCTION PER 24H (15MM)	(AT21°C/WT15°C)	20 KG	32 KG
	(AT32°C/WT 21°C)	18 KG	28 KG
WATER CONSUMPTION PER 24H (AT32°C/WT21°C)	0.11 m ³	0.13 m ³	0.23 m ³
	6.11L / 1KG ICE	4.64L / 1KG ICE	4.42L / 1KG ICE
ICE PRODUCTION PER CYCLE (AT32°C/WT21°C)	1 KG / 9 PCS	1.48 KG / 12 PCS	2.2 KG / 20 PCS
STORAGE CAPACITY	APPROX: 10 KG	APPROX: 17 KG	APPROX: 41 KG

• **WARRANTY:**
Two years parts & labour for entire unit, 3rd year on compressor only. Excluding door & exterior damages

OPERATING CONDITIONS: • Voltage Range: ±10% • Ambient Temperature: 5°-38°C
• Water Supply: 0.05-0.78 Mpa • AC Supply Voltage: 1/220-240V / 50 Hz

R1