



# HOSHIZAKI

## > IM-30CA

Daily ice production capacity up to 30 KG



The Hoshizaki cube is characterized by its clean edges and its transparency streaked by a marbling effect. When the CELL WALLS block the freezing water's expansion from all sides, while reaching up to  $-30^{\circ}\text{C}$  during the cubing process. As the temperatures go down, the water keeps expanding and marbles start to form as a sign of extreme density and compactness of every single cube.



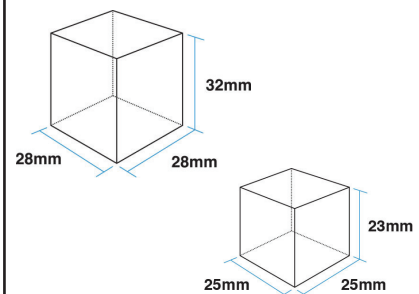
CUBE ICE MAKER SERIES

I-FIT  
SERIES

### FEATURES

- > Zero clearance rear design for easy installation
- > Round front door and easy access to ice
- > Pull out air filter design for easy cleaning
- > Front water valve access for easy servcability
- > Stainless steel exterior provides hygienic and high qualified finish

### ICE SIZE



### MARBLE EFFECT



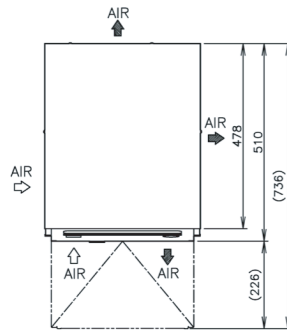
- > Individual cube
- > Impurity free
- > Hardest ice to enjoy slow melting and dilution of drinks

### CERTIFICATION

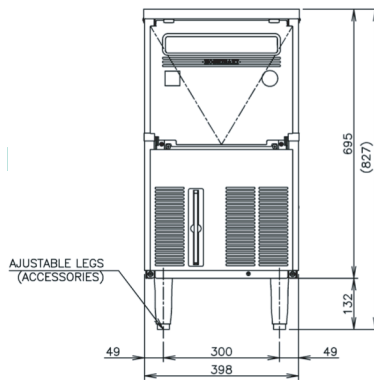


# DIMENSIONS & SPECIFICATION

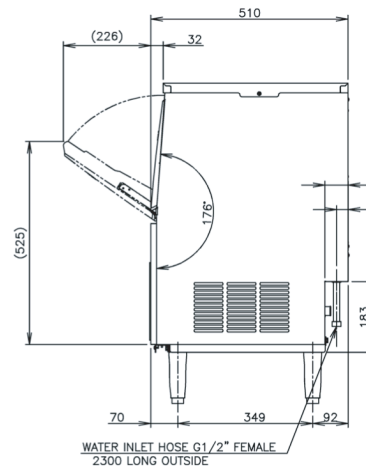
## TOP SIDE



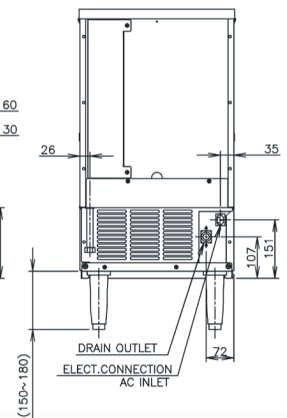
## FRONT SIDE



## RIGHT SIDE



## BACK SIDE



### IM-30CA

#### ICE DIMENSIONS (WxDxH)

28 x 28 x 32mm (Standard size)  
25 x 25 x 23mm (25mm size)

#### DIMENSIONS (WxDxH)

398 x 510 x 695 mm

#### PACKAGE DIMENSIONS (WxDxH)

490 x 610 x 870 mm

#### WEIGHT (NET/GROSS)

39 KG / 49KG

#### AMPERAGE / STARTING AMPERAGE

1.7 A / 9 A

#### ELECTRICAL CONSUMPTION (AT32°C/WT21°C)

250 W

#### REFRIGERANT CHARGE

R134a / 130g

#### HEAT REJECTION (AT32°C/WT21°C)

520 W 447kcal/h

#### ICE PRODUCTION PER 24H (15MM)

(AT10°C/WT10°C)	30 KG
(AT21°C/WT15°C)	28 KG
(AT32°C/WT21°C)	25 KG

#### ICE PRODUCTION PER CYCLE (AT32°C/WT21°C)

Approx. 0.4 KG / 18 pcs  
FREEZE CYCLE TIME PER CYCLE 26 minutes

#### WATER CONSUMPTION PER 24H (AT32°C/WT21°C)

0.06 m<sup>3</sup> ≈ 2.4 L / 1 KG ice

#### NOTE:

All dimensions indicated are  
Width x Depth x Height in mm  
\*60Hz units are available on request

#### OPERATING CONDITIONS:

• Voltage Range: 198V-254V • Ambient Temperature: 1°-40°C • Water Supply:  
5°-35°C / 0.07-0.78 Mpa / 7.25-116 PSI • AC Supply Voltage: 1/220-240V / 50Hz