



HOSHIZAKI



> FM-300AKE

flake ice

daily ice production capacity of up to **320KG**



> FM-300AKE-N

nugget ice

daily ice production capacity of up to **270KG**



(With Hoshizaki Storage Bin - **B301SA**)

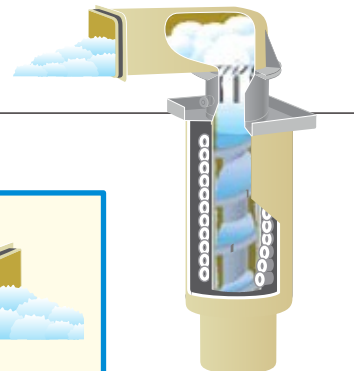
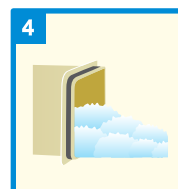
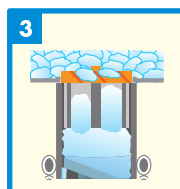
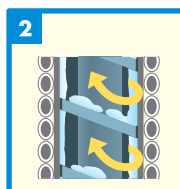
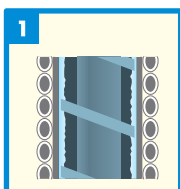
FLAKE ICE MAKER SERIES

Apart from drinks, ice is important for preservation. Hoshizaki's FM ice machines produce flakes that are 70% ice and 30% water and are primarily used for cooling purposes. It is also used in large facilities such as in healthcare, catering, supermarket chains or even cocktail bars.

FEATURES

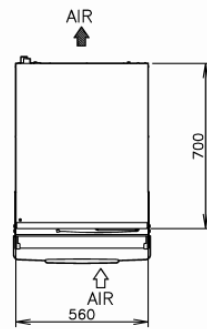
- > Auger is made of doublehardened stainless steel. Combined with carbon bearings, they work optimally in a tough and wet environment. Benefits include longer product life expectancy and reduced maintenance costs.
- > 100% hfc free CO2 foam insulation maintains consistent temperature
- > smart computer board technology
- > stainless steel exterior
- > led error indicator for easy diagnosis

UNIQUE ICE PRODUCTION SYSTEM

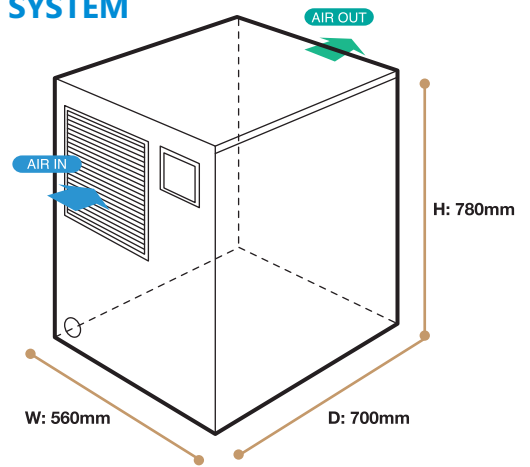


DIMENSIONS & SPECIFICATION

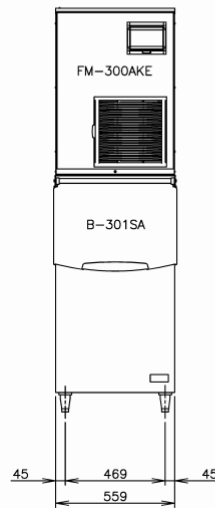
TOP SIDE



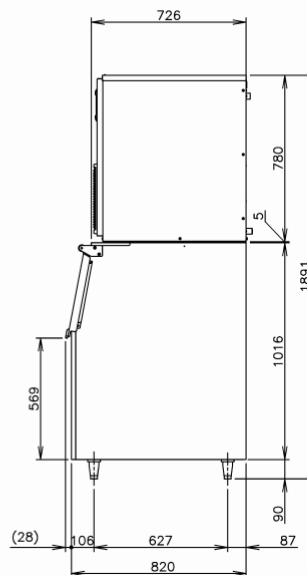
FLAKE ICE MAKER AIR SYSTEM



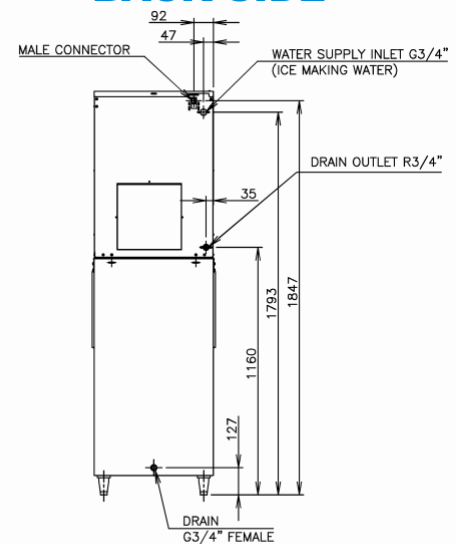
FRONT SIDE



RIGHT SIDE



BACK SIDE



MODEL NAME	FM-300AKE	FM-300AKE-N
ICE SHAPE	Flake	Nugget
DIMENSIONS (MM) (W x D x H)	560 x 700 x 780	
PACKED DIMENSIONS (MM) (W x D x H)	665 x 820 x 950	
WEIGHT (NETT/GROSS)	80 KG / 87 KG	
AMPERAGE / STARTING AMPERAGE	5.8A / 19A	5.7A / 19A
ELECTRICAL CONSUMPTION	1000 W	
REFRIGERANT CHARGE	R404A	
HEAT REJECTION	2200 W (1891 kcal/h)	
ICE PRODUCTION PER 24H	(AT10C/WT10C)	320 KG
	(AT21C/WT15C)	260 KG
	(AT32C/WT21C)	200 KG
WATER CONSUMPTION PER 24H (AT32C/WT21C)	0.230 m ³	0.210 m ³
	1.15 L / 1KG ICE	1.16 L / 1KG ICE

• WARRANTY:

Two years parts & labour for entire unit, 3rd year on compressor only. Excluding door & exterior damages

OPERATING CONDITIONS:

• Voltage Range: 198V-254V • Ambient Temperature: 5°-40°C
 • Water Supply: 5°-35°C / 0.05-0.8 Mpa / 7.25-116 PSI • AC Supply Voltage: 1/220-240V / 50 Hz